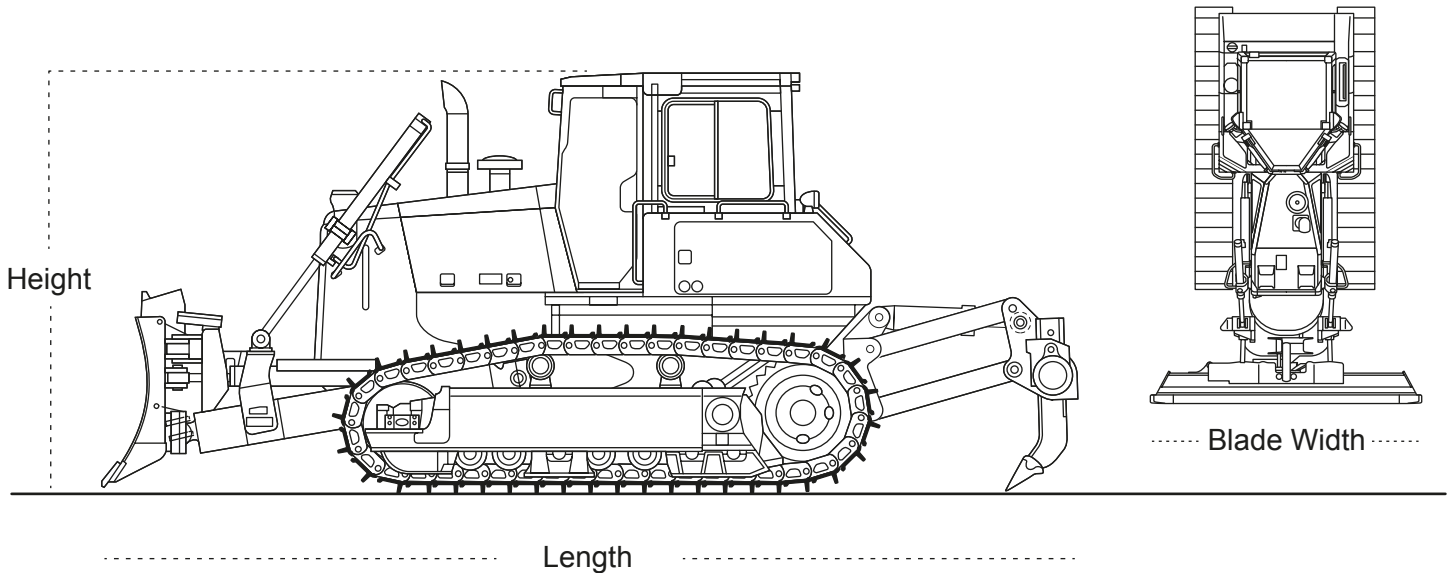


DOZERS

SPECIFICATIONS v.01/2013



	Operating Weight (tonne)	Height (mm)	Length (mm)	Blade Width (mm)
Small	7.5	2660	4200	2620
Medium	18	3180	5377	3250
Large	43	3990	6930	4300

ADDITIONAL FUNCTIONS & ATTACHMENTS:

- > **GPS Technology** Commonly used to give readings of ground levels, GPS technology is developing rapidly in the Dozer's usage which allows for accurate production.
- > **Blades types** Blades can be matched to the application, including 6-way Power Angle Tilt (PAT) blades.
- > **Rippers** Either single or three-tyne rippers to loosen densely compacted material.

* Equipment specifications are a guide only and may vary by year, make and model.

HEAD OFFICE

Eastern Plant Hire
358 Whitehorse Road
Nunawading Victoria 3131
Australia

VISIT US

Office hours 6:00am – 6:30pm.
For emergency assistance outside of these times, call 03 8878 9111 to speak to our after hours representative.

CONTACT US

T 03 8878 9111
F 03 8878 9100
E admin@ephgroup.com.au
W easternplanthire.com

FOLLOW US

For latest news, social media & offers;
[f](#) easternplanthire
[t](#) EPHGroup
[in](#) eastern-plant-hire